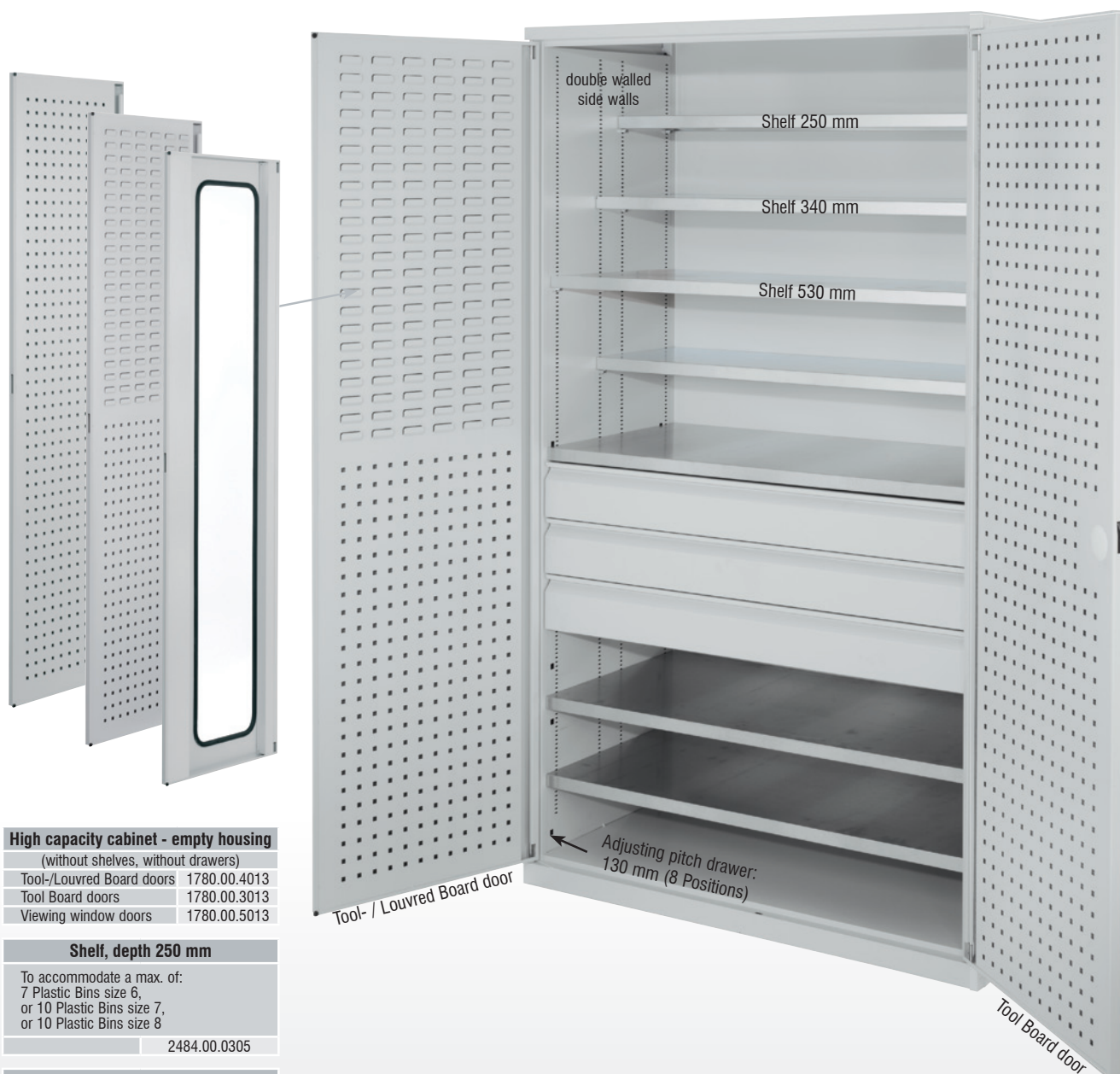


The construction of the High Capacity Cabinet is flexible and quick, throughout its intelligent modular Design. The High Capacity Cabinet is made of a body with Tool and / or Louvred doors, Viewing windows doors, drawers, supplemented by drawer divider sets, and galvanized shelves in three different depths.



High capacity cabinet - empty housing (without shelves, without drawers)

Tool-/Louvred Board doors	1780.00.4013
Tool Board doors	1780.00.3013
Viewing window doors	1780.00.5013

Shelf, depth 250 mm

To accommodate a max. of:
7 Plastic Bins size 6,
or 10 Plastic Bins size 7,
or 10 Plastic Bins size 8

2484.00.0305

Shelf, depth 340 mm

To accommodate a max. of:
5 Plastic Bins size 3,
or 5 Plastic Bins size 4,
or 7 Plastic Bins size 5

2483.00.0305

Shelf, depth 530 mm

To accommodate a max. of:
3 Plastic Bins size 1,
or 3 Plastic Bins size 2
Servers also for cover of the drawers

2482.00.0305



Dimensions Plastic Bins:

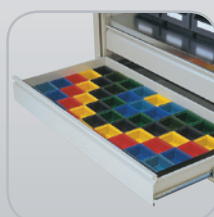
- Size 1: L 500 x W 300 x H 250 mm
- Size 2: L 500 x W 300 x H 200 mm
- Size 3: L 350 x W 200 x H 200 mm
- Size 4: L 350 x W 200 x H 150 mm
- Size 5: L 290 x W 140 x H 130 mm
- Size 6: L 230 x W 140 x H 130 mm
- Size 7: L 160 x W 105 x H 75 mm
- Size 8: L 85 x W 105 x H 45 mm



Single drawer, H 125 mm

incl. Telescopic sliders with Full extension
(can be retrofitted)

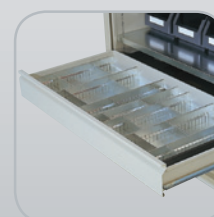
2988.00.5713



Drawer Divider Set

Plastic Bins size 8

2988.00.9800



Drawer Divider Set

made of Fine sheet metal

2988.00.6105