

Utility and Picking Trolleys with ®RasterPlan Plastic Bins

Anywhere where parts must be collected from various different locations, whether they be working materials, or goods to be picked, the utility and picking trolley has become an essential aid.

Details

- Solid welded steel construction
- Impact and scratch resistant plastic coating (RAL 5010)
- With level or partly angled shelves
- Shelves with raised edge
- Standard equipped with 2 trestle wheels and 2 steering wheels with full stop. (EN 1757-3)
- Wheels are grey - traceless



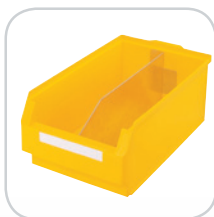
Model 20



Model 13



Standard equipped with 2 trestle wheels and 2 steering wheels with full stop



Fitting RasterPlan Plastic Bins
L 500 x B300mm
Size 1 H 250 mm
Size 2 H 200 mm



Shelves with raised edge



Model 22



Model 12



Model 15



Model 18

Utility and Picking Trolleys with ®RasterPlan Plastic Bins

Utility and Picking Trolleys with ®RasterPlan Plastic Bins									
Dimensions	H 923 x W 383 x D 485 mm			H 1315 x W 700 x D 485 mm			H 1315 x W 1015 x D 485 mm		
with level shelves									
Model	10	11	12	13	14	15	16	17	18
Shelves	3	3	3	4	4	4	4	4	4
Equipped with	---	3 bins size-1	3 bins size-2	---	8 bins size-1	8 bins size-2	---	12 bins size-1	12 bins size-2
gentian blue	7708.00.0121	7708.01.0121	7708.02.0121	7706.00.0121	7706.01.0121	7706.02.0121	7707.00.0121	7707.01.0121	7707.02.0121
with level and angled shelves									
Model	---	---	---	20	21	22	23	24	25
Shelves	---	---	---	2 / 2	2 / 2	2 / 2	2 / 2	2 / 2	2 / 2
Equipped with	---	---	---	---	8 bins size-1	8 bins size-2	---	12 bins size-1	12 bins size-2
gentian blue	---	---	---	7706.00.0221	7706.01.0221	7706.02.0221	7707.00.0221	7707.01.0221	7707.02.0221



Tool storage

Cabinet systems

Storage of small parts

Ergonomics