



The ®RasterPlan Work Bench Stand is a practical help, handy in the workshop, on the work bench etc. One side with RasterPlan louvred stamping and the other side with RasterPlan Square Hole System, including a practical carry handle.



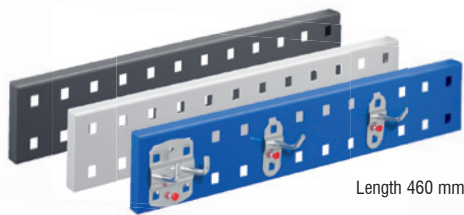
For your work bench and sales counter

®RasterPlan Workbench Stand empty	
Placement area H 450 x W 350 (2x) Dim. W 350 x H 430 x D 280 mm	
gentian blue	4404.00.5721

®RasterPlan

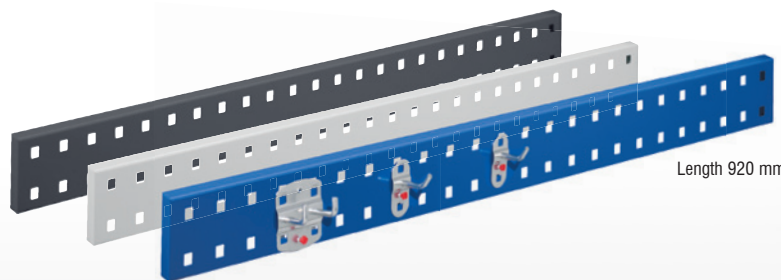


The Usage of the Wall Rail helps to provide quick access to tools and small parts on your working place.

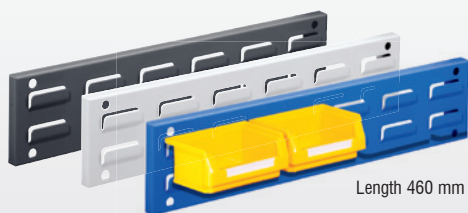


Length 460 mm

®RasterPlan Wall Rail Tool Board, empty			
Dim. in mm	light grey	gentian blue	anthracite
L 460 x H 70 mm	4001.00.5113	4001.00.5121	4001.00.5108
L 920 x H 70 mm	4001.00.5213	4001.00.5221	4001.00.5208

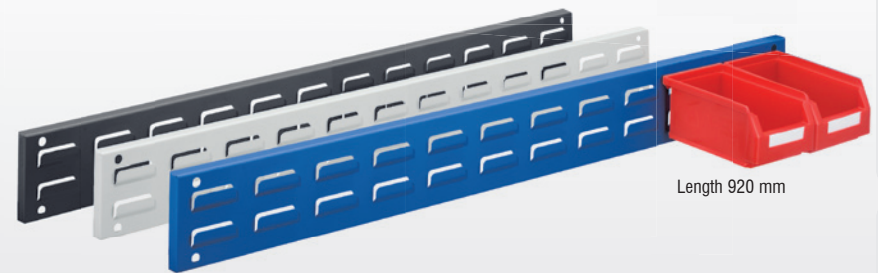


Length 920 mm

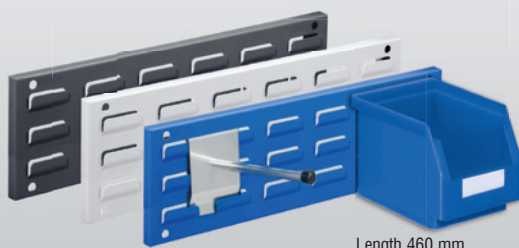


Length 460 mm

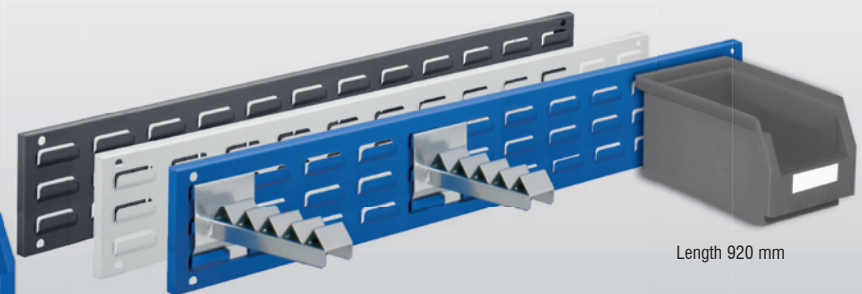
®RasterPlan Wall Rail Louvred Board, empty			
Dim. in mm	light grey	gentian blue	anthracite
L 460 x H 100 mm	4202.00.5113	4202.00.5121	4202.00.5108
L 920 x H 100 mm	4202.00.5213	4202.00.5221	4202.00.5208



Length 920 mm



Length 460 mm



Length 920 mm

®RasterPlan Wall Rail Louvred Board, empty			
Dim. in mm	light grey	gentian blue	anthracite
L 460 x H 140 mm	4202.00.5313	4202.00.5321	4202.00.5308
L 920 x H 140 mm	4202.00.5413	4202.00.5421	4202.00.5408

Available in three colors



Equipping examples	
Dim. in mm	Plastic Bins
Strip length 460	3 x size-5 / -6 or 4 x size-7 / -8
Strip length 920	6 x size-5 / -6 or 8 x size-7 / -8

Tool storage

Cabinet systems

Storage of small parts

Ergonomics