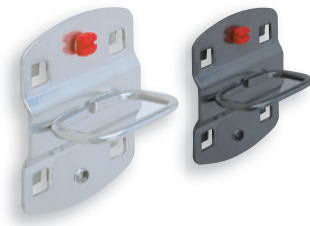


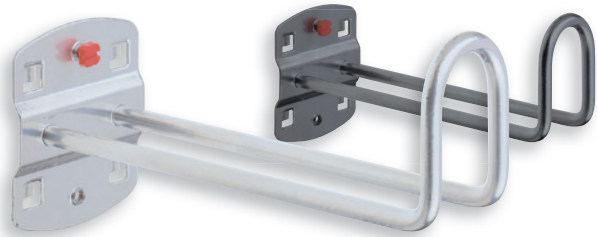
Machine Tool Holder			
Dimensions		Color	
inner Ø		aluminium	anthracite
40		4040.00.2601	4040.00.2608
60		4040.00.2701	4040.00.2708
80		4040.00.2801	4040.00.2808



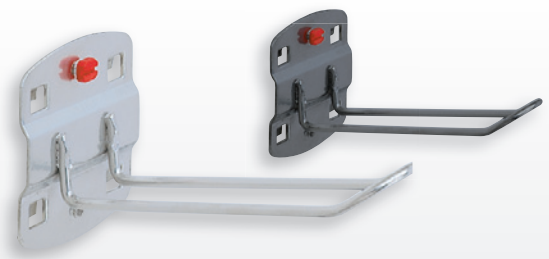
Pliers Holder			
Dimensions		Color	
W	D	aluminium	anthracite
35	20	4040.00.2201	4040.00.2208
40	50	4040.00.3801	4040.00.3808
50	75	4040.00.3901	4040.00.3908
55	20	4040.00.2301	4040.00.2308
75	20	4040.00.2401	4040.00.2408



Pipe Bracket, also for hoses, cables, etc.			
Dimensions		Color	
W	Ø	aluminium	anthracite
35	60	4042.00.0101	4042.00.0108
35	100	4042.00.0201	4042.00.0208



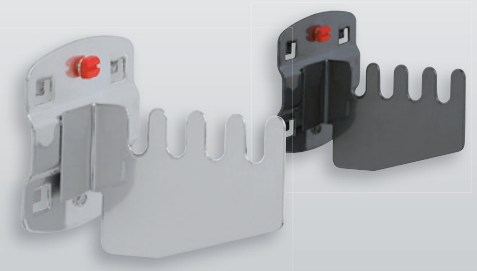
Cable Holder with hook end 50 mm tall			
Dimensions		Color	
L	W	aluminium	anthracite
100	37	4040.00.4001	4040.00.4008
150	37	4040.00.3101	4040.00.3108
200	37	4040.00.3201	4040.00.3208



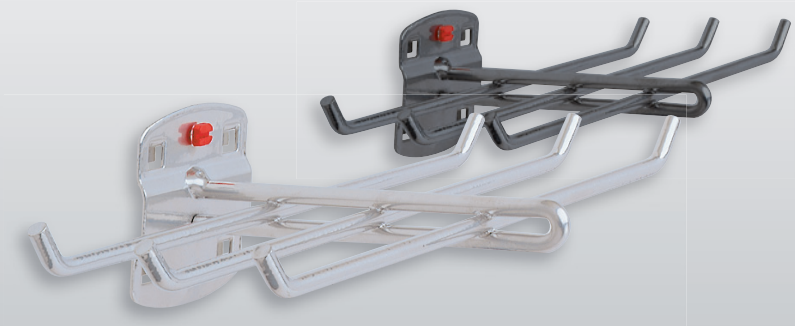
Tool Holder for self-service packaging			
Dimensions		Color	
L	B	aluminium	anthracite
125	30	4040.00.3301	4040.00.3308



Tool Holder, three pronged			
Dimensions		Color	
L	W	aluminium	anthracite
150	45	4040.00.3001	4040.00.3008



Saw Holder (please order in pairs)			
		Color	
		aluminium	anthracite
for 4 sabs		4042.00.0301	4042.00.0308



Tool Holder six pronged			
Dimensions		Color	
L	W	aluminium	anthracite
140	240	4040.00.2901	4040.00.2908

Tool storage

Cabinet systems

Storage of small parts

Ergonomics