

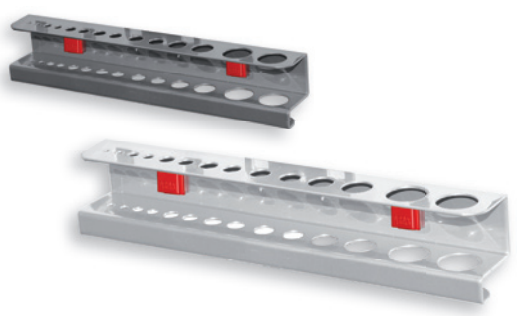


Rangement d'outils

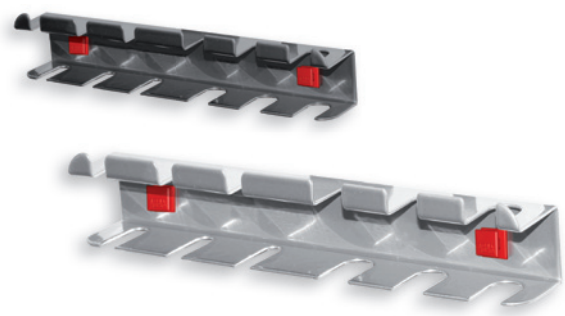
Système d'armoires

Stockage de petites pièces

Ergonomie



| Support Forets / Clés Allen (div. Ø) |              |              |
|--------------------------------------|--------------|--------------|
| H 35 x L 200/390 x P 30 mm           |              |              |
| Coloris                              | alu          | anthracite   |
| Pour 14 pièces                       | 3342.00.7801 | 3342.00.7808 |
| Pour 28 pièces                       | 3342.00.8301 | 3342.00.8308 |



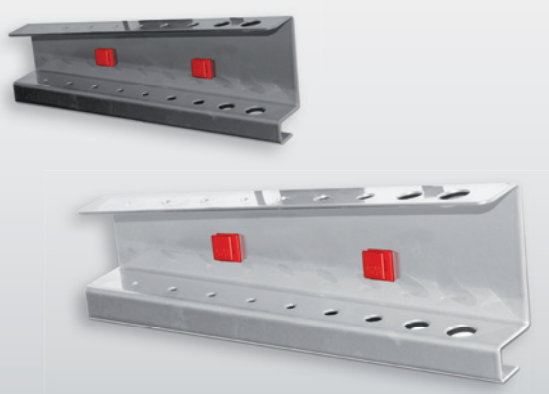
| Support Tournevis          |              |              |
|----------------------------|--------------|--------------|
| H 40 x L 200/390 x P 30 mm |              |              |
| Coloris                    | alu          | anthracite   |
| Pour 6 pièces              | 3342.00.7601 | 3342.00.7608 |
| Pour 12 pièces             | 3342.00.7701 | 3342.00.7708 |



| Support outils à perforer   |              |              |
|-----------------------------|--------------|--------------|
| Surface utile : 390 x 58 mm |              |              |
| Coloris                     | alu          | anthracite   |
| L 390 mm                    | 3344.00.5501 | 3344.00.5508 |



| Support outils à perforer   |              |              |
|-----------------------------|--------------|--------------|
| Surface utile : 110 x 58 mm |              |              |
| Coloris                     | alu          | anthracite   |
| L 110 mm                    | 3344.00.5401 | 3344.00.5408 |



| Support Clés Allen, Ø 2 - 11 mm |              |              |
|---------------------------------|--------------|--------------|
| H 50/70 x L 200 x P 25 mm       |              |              |
| Coloris                         | alu          | anthracite   |
| Pour 9 Clés                     | 3342.00.7501 | 3342.00.7508 |



| Support Outils pour CM-2 et CM-3 |              |              |
|----------------------------------|--------------|--------------|
| H 85 x L 395 x P 60 mm           |              |              |
| Coloris                          | alu          | anthracite   |
| CM-2 (15 x Ø 17 mm)              | 3342.00.7901 | 3342.00.7908 |
| CM-3 (12 x Ø 23 mm)              | 3342.00.8001 | 3342.00.8008 |